

# MONTHLY MEMBERSHIP PROGRESS REPORT

District 17 A

Results as of: 5/31/2026

GMT:

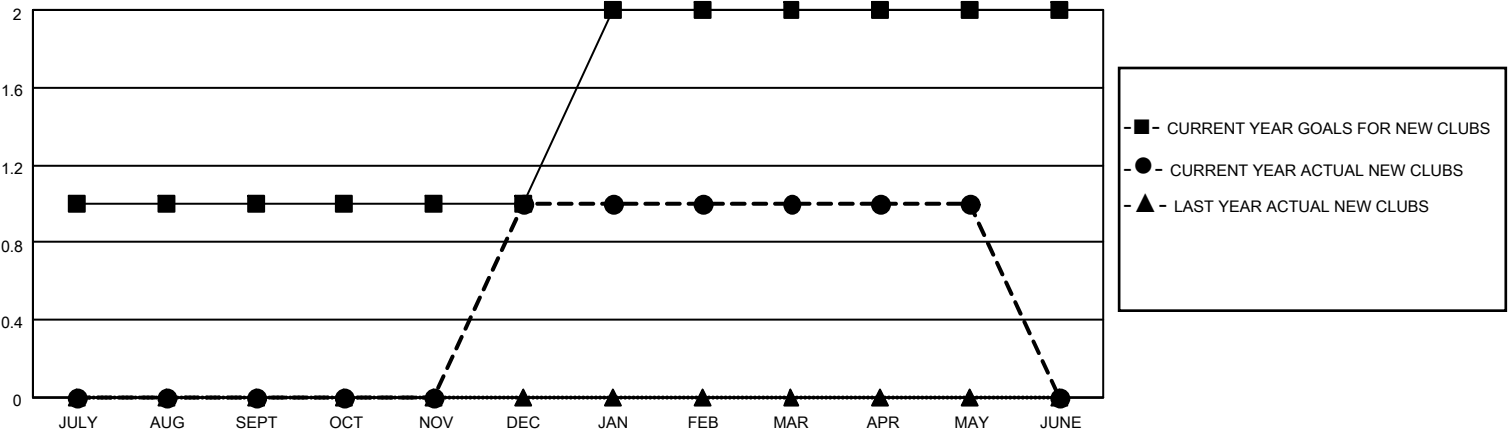
LOCATION KANSAS

GMT CA

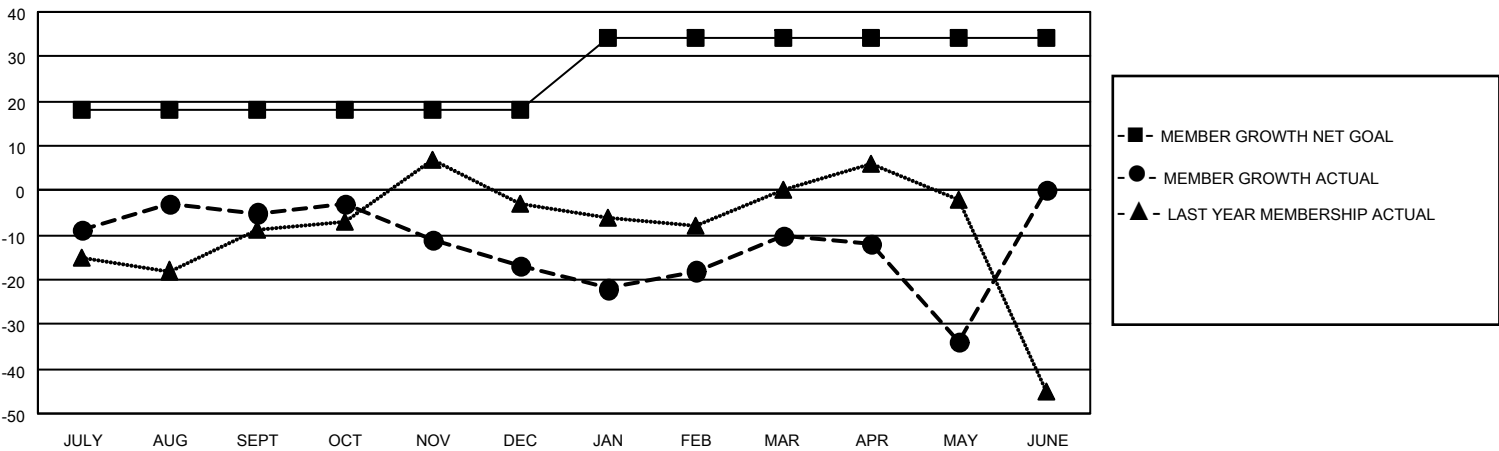
Clubs			
RESULTS FOR 2025-2026			
QUARTER	NEW CLUB GOAL	NEW CLUBS	DROPPED CLUBS
JULY/AUG/SEPT	1	0	1
OCT/NOV/DEC	0	1	1
JAN/FEB/MAR	1	0	0
APR/MAY/JUNE	0	0	0

Members			
RESULTS FOR 2025-2026			
QUARTER	MEMBER GROWTH NET GOAL	MEMBER GROWTH ACTUAL	DROPPED MEMBERS ACTUAL (including transfers)
JULY/AUG/SEPT	18	31	34
OCT/NOV/DEC	0	71	74
JAN/FEB/MAR	16	38	30
APR/MAY/JUNE	0	15	39

GOALS AND ACTUAL NEW CLUBS CUMULATIVE



GOALS AND ACTUAL MEMBERS CUMULATIVE



DROPPED CLUBS: 2

35 CLUBS OF 70 ADDED 1 OR MORE NEW MEMBERS

GENDER DISTRIBUTION

MALE 868 (64.11%)  
FEMALE 485 (35.82%)

DROPPED MEMBERS

DECEASED	31
CLUB CANCELLED	0
OTHER	146
<b>TOTAL</b>	<b>177</b>

[CLICK HERE FOR CUMULATIVE MEMBERSHIP DATA](#)

TOTAL FAMILY UNIT MEMBERS	325
FAMILY MEMBERS PAYING HALF DUES	166